

Franklyn James



Narrow Street, E14 8BP
£3,600 Per Calendar Month



Narrow Street, E14 8BP

£3,600 Per Calendar Month

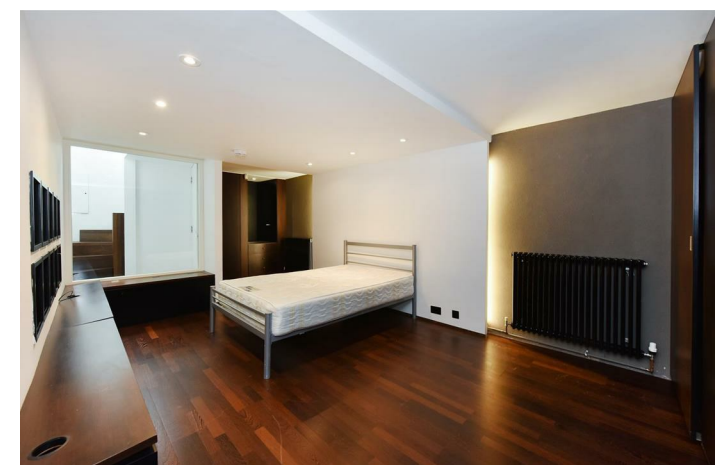
Explore this captivating four-story townhouse nestled in the heart of Limehouse. As you step through the entrance, you're welcomed by a spacious main reception area seamlessly connected to a dining space that opens into a fully fitted kitchen with ample storage.

On the first floor, you'll discover two inviting bedrooms. One boasts an en-suite bathroom, while the other features a private terrace. The top floor is home to the master bedroom, accompanied by a generously sized family bathroom. This level also offers access to an exclusive private roof terrace. Furthermore, the basement offers an additional living space.

This exceptional townhouse is available fully furnished. Canary Wharf is moments away from the property providing a plethora of local amenities.

Description

- Furnished
- Modern four story townhouse
- Boasting over 1400 square feet
- Three spacious double bedrooms
- Fully fitted kitchen
- Two private roof terraces
- Ample storage
- Sought after location
- Close to Westferry DLR station
- Moments away from Canary Wharf



Unfurnished

Council Tax Band: F

Available: 14th May 2026

